

PART OF S.W. 1/4 OF N.E. 1/4 OF SEC. 32, T.6N., R.2W., S.L.B. & M.

113

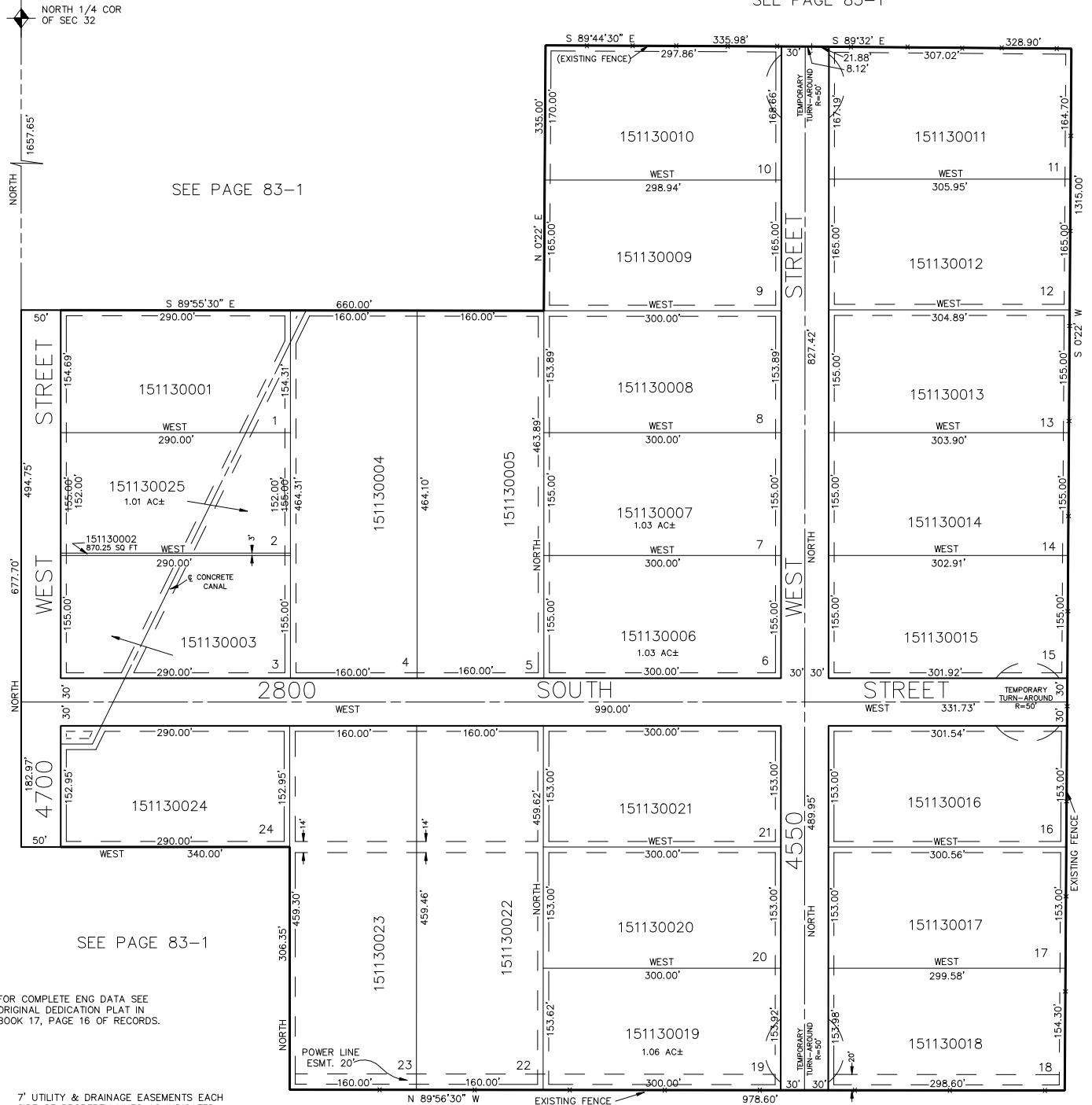
# WEST HILLS SUBDIVISION

IN WEBER COUNTY

SCALE 1" = 100'

TAXING UNIT: 53

SEE PAGE 83-1



SEE PAGE 83-1

SEE PAGE 84